



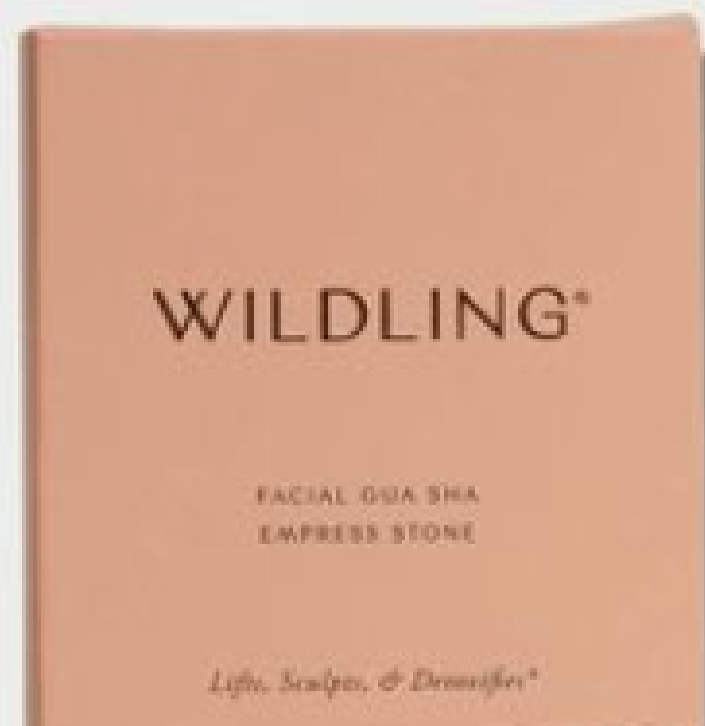
SERENITY SPRINGS

INTERIOR DETAILING

SKYLAR GREENBERG

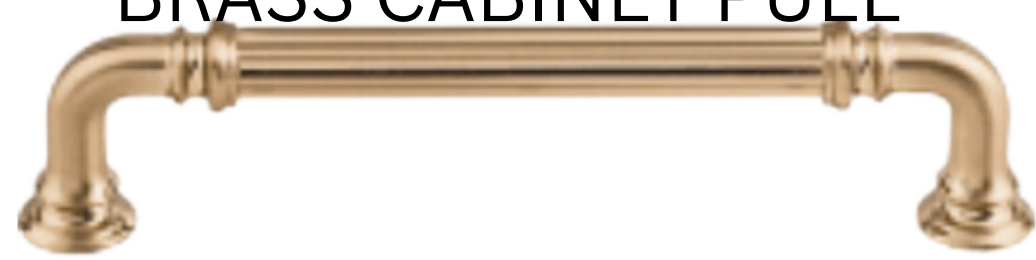
SPRING 2024

@INTERIORDSIGNBYSKY



INSPIRATION IMAGES

BRASS CABINET PULL



FLOORING



CABINETS



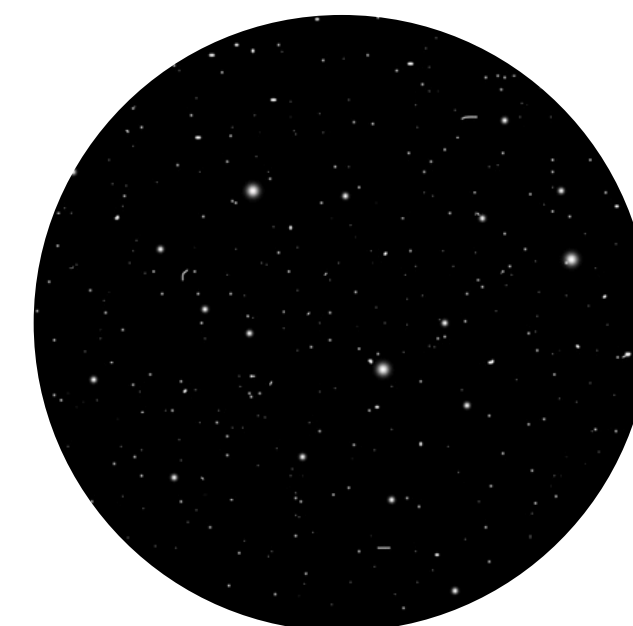
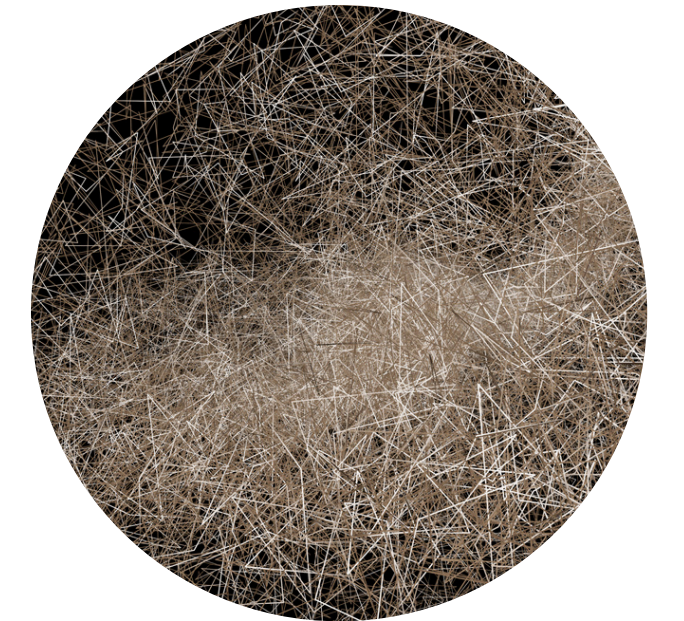
COUNTERTOP



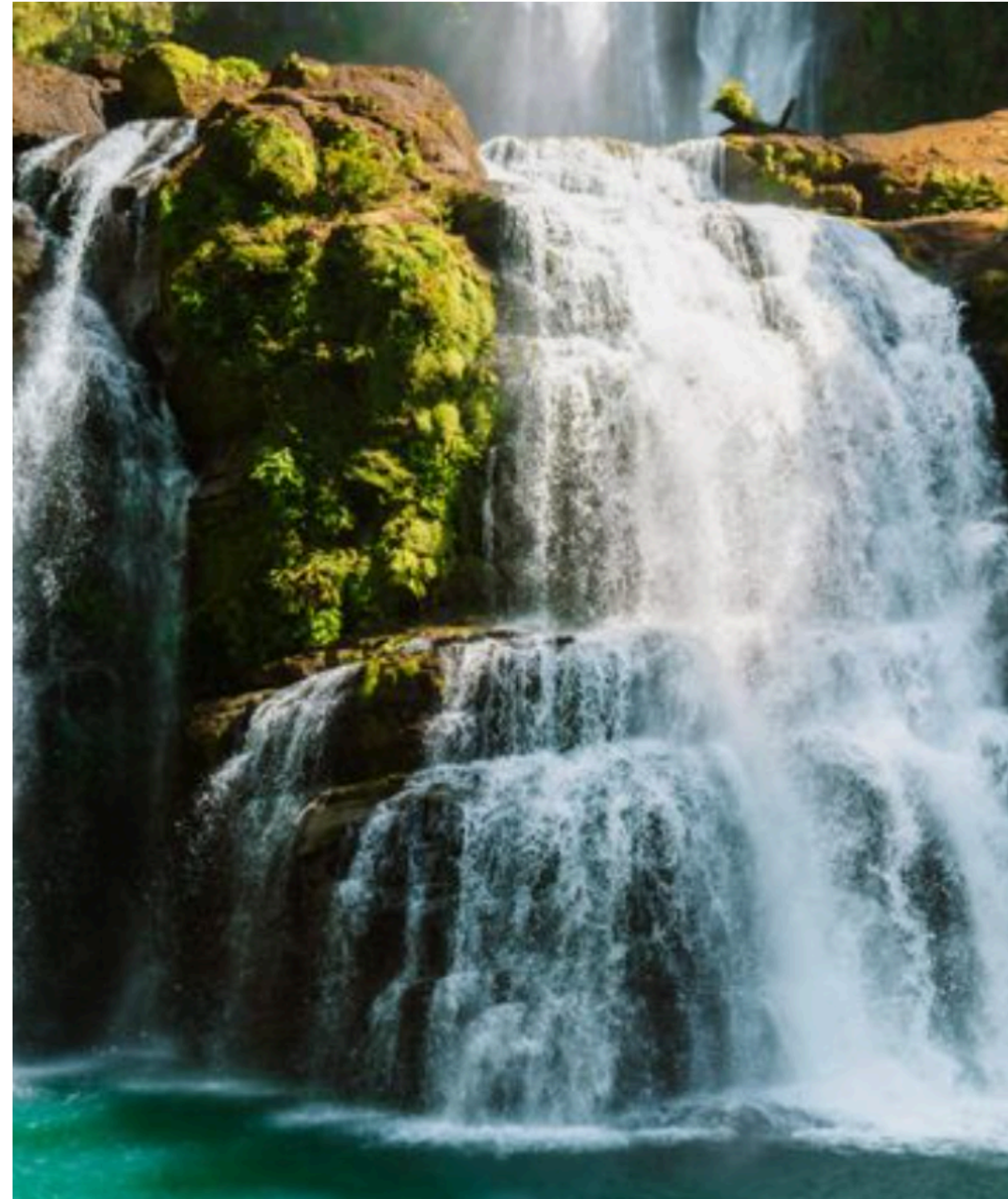
BACKSPLASH



WATERFALL BEHIND RECEPTION



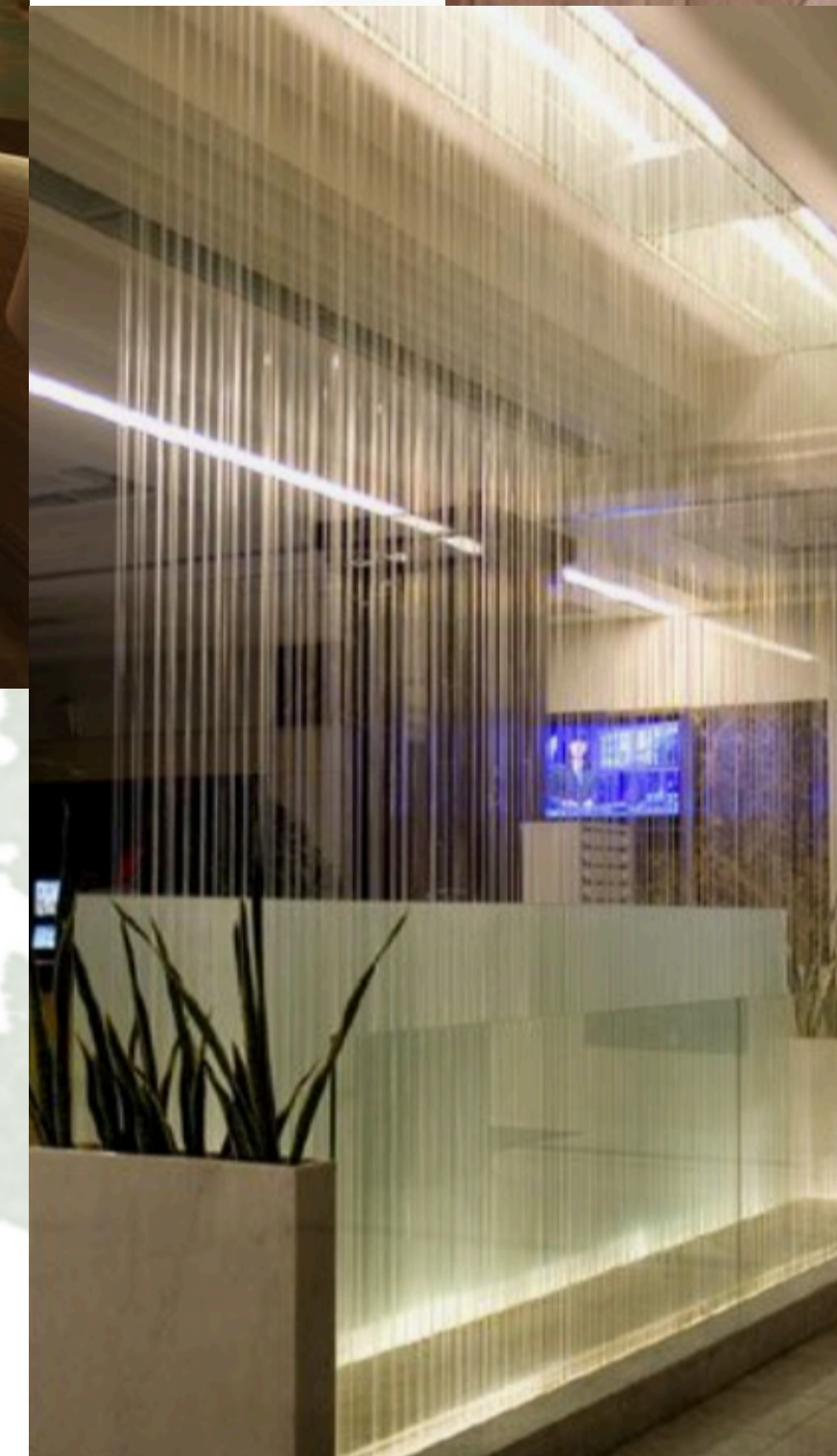
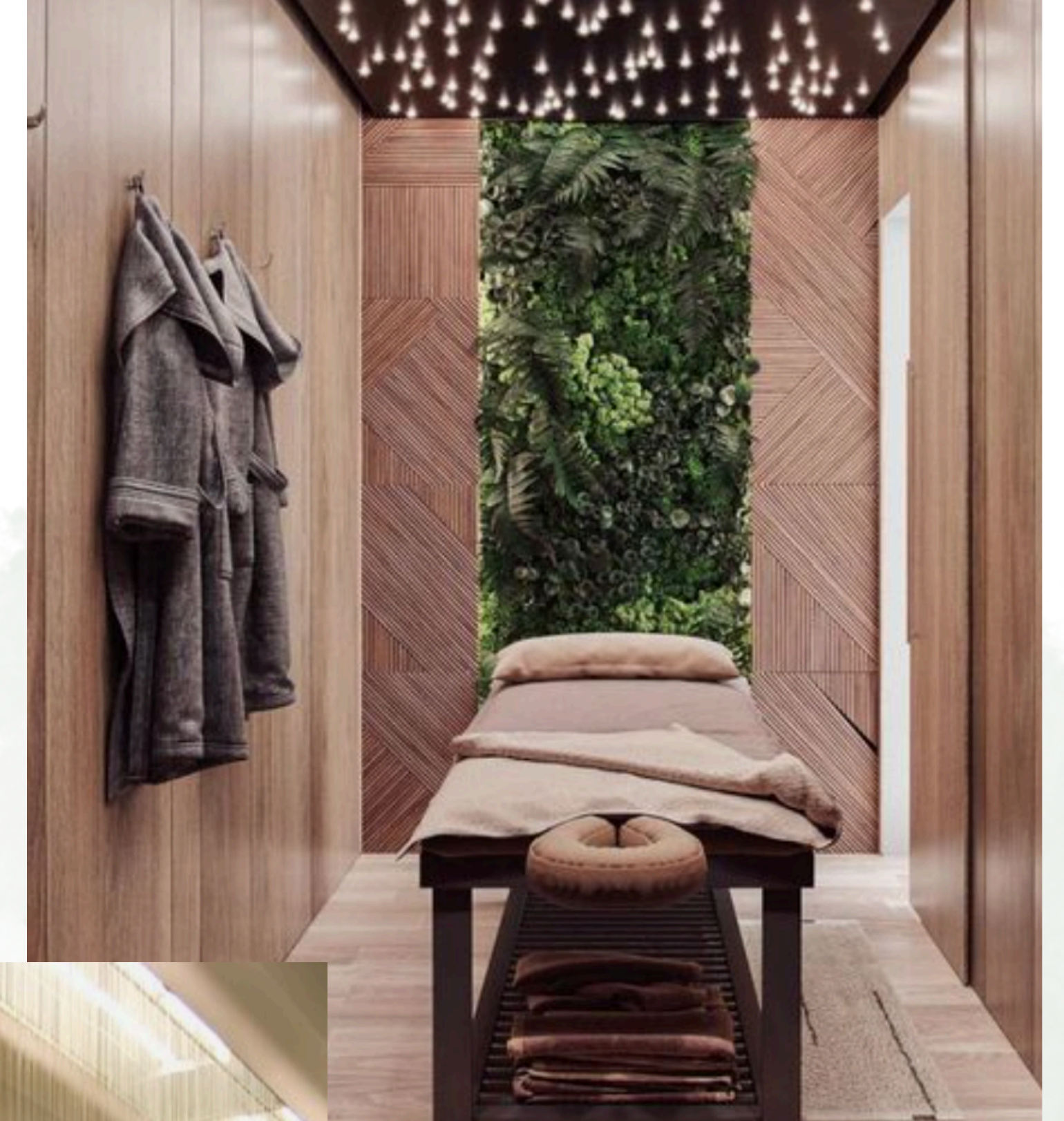
CONCEPT PHOTOS

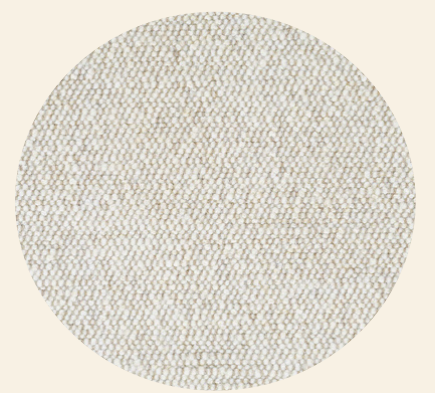
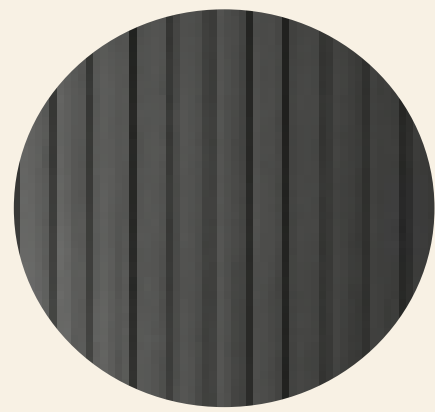


DESIGN CONCEPT

THE WELLNESS FACILITY USES ORGANIC, **BIOPHILIC** DESIGN TO FOSTER **GROWTH** AND **WELL-BEING**. THE GOAL IS TO CREATE A **WELCOMING** AND **COMFORTABLE** SPACE. IN ORDER TO EVOKE A SENSE OF CALM AND RELAXATION, THE DESIGN CONCEPT IS CENTERED ON **NATURAL ELEMENTS** AND A **CONNECTION TO WATER**. A SMOOTH FLOW AND A SENSE OF BEING SURROUNDED BY **NATURE** ARE PRODUCED IN THE ROOM BY USING DIFFERENT **TEXTURES** OF AND DARK WOODS, WITH TOUCHES OF LIGHT ELEMENTS TO ESTABLISH **HARMONY** AND **BALANCE**. BY FOSTERING A SENSE OF CALM AND QUIET AND DEVELOPING A CONNECTION WITH NATURE, THE DESIGN COMPONENTS AIM TO PROMOTE PEOPLE'S WELL-BEING. UTILIZING **ORGANIC ELEMENTS** LIKE **WOOD**, **STONE**, AND **PLANTS** HARMONIZES WITH THE ENVIRONMENT AND GIVES THE AREA A PEACEFUL, **SERENE** VIBE.

IMAGE BOARD





Wellness Center

